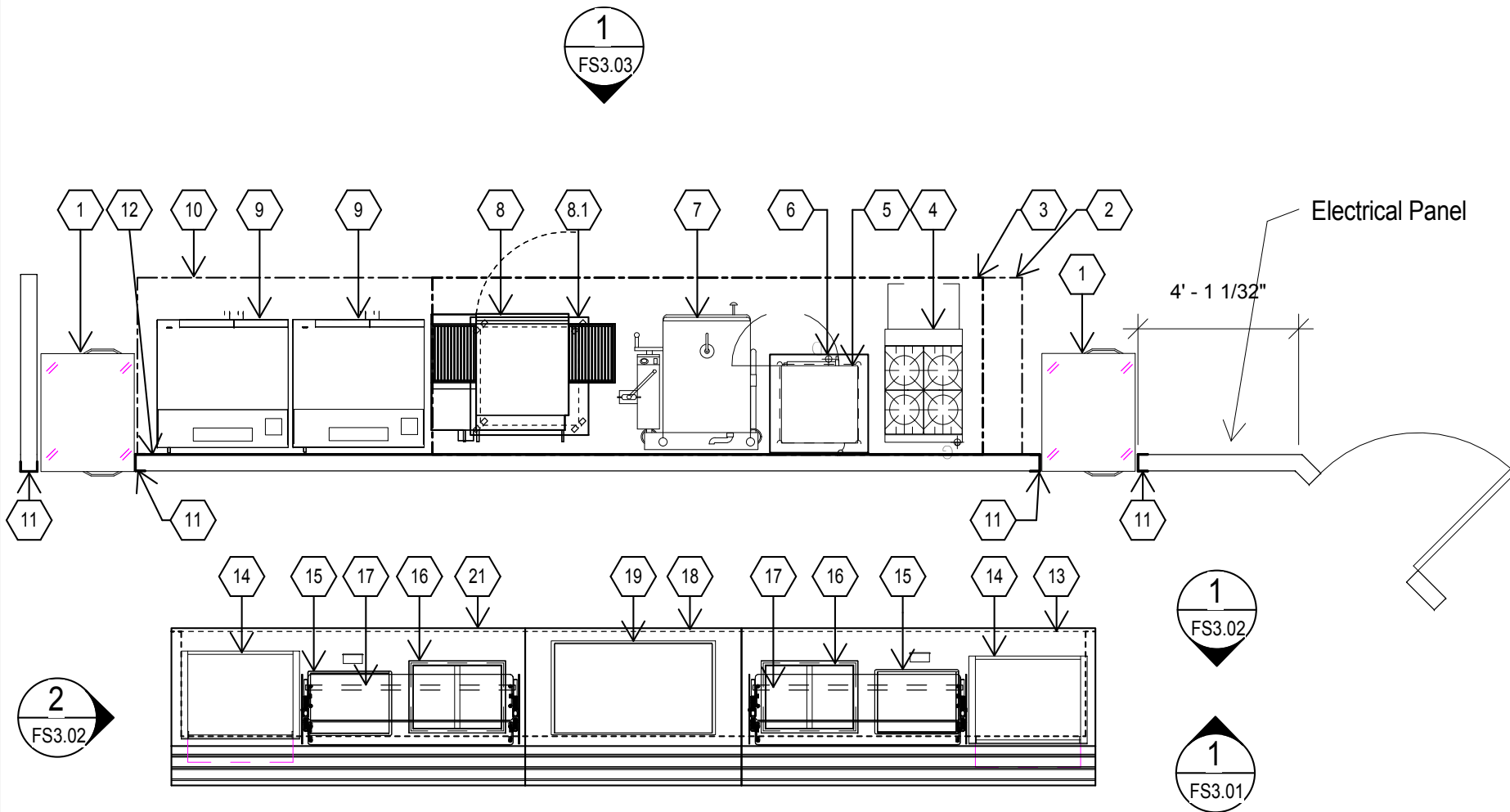


## FOOD SERVICE EQUIPMENT LIST

ITEM NO	QUANTITY		DESCRIPTION	MANUFACTURER
	QTY	LOT		
1	2		HEATED CABINET, PASS-THRU	Continental Refrigerator
2	1		FIRE SUPPRESSION SYSTEM	ANSUL
3	1		TYPE 1 EXHAUST HOOD	AVTEC
4	1		RANGE	GARLAND
5	2		STEAMER, CONNECTIONLESS	ACS
6	1		EQUIPMENT STAND DOUBLE	ACS
7	1		TILTING SKILLET	CLEVELAND
8	2		COUNTERTOP CONVEYOR OVEN	LINCOLN
8.1	1		MOBILE EQUIPMENT STAND (36"X36")	FABRICATOR
9	2		STACKED CONVECTION OVENS	VULCAN
10	1		CONDENSATE HOOD	AVTEC
11	4		END CAP	FABRICATOR
12	1		STAINLESS STEEL WALL FLASHING	FABRICATOR
13	1		SERVICE COUNTER	EAGLE
14	2		MERCHANDISER WARMERS	HATCO
15	2		HEATED STONE SHELVES DROP-IN	HATCO
16	2		HEATED WELLS, MANIFOLDED	HATCO
17	2		BREATH GUARDS	BSI
18	1		SERVICE COUNTER	EAGLE
19	1		DROP-IN REFRIGERATED CASE SELF-SERVE	STRUCTURAL CONCEPTS
20	0		SPARE NUMBER	
21	1		SERVICE COUNTER	EAGLE



## 1 FOODSERVICE PLAN

1/4" = 1'-0"



ONTARIO SD  
ONTARIO HS

No.	Description	Date

### FOODSERVICE LAYOUT

Project number 077  
Date 3/10/16  
Drawn by RS  
Checked by RS

## FS1.01

Scale 1/4" = 1'-0"

# FOOD SERVICE EQUIPMENT & EXHAUST SCHEDULE

		EQUIPMENT					VENTILATION									
ITEM NO	QUANTITY		DESCRIPTION	MANUFACTURER	MODEL	FURNISHED	INSTALLED	EX. DUCT W	EX. DUCT D	EX. CFM	EX. S.P	MAKE-UP W	MAKE-UP. D	MAKE-UP CFM	MAKE-UP S.P.	VENTILATION REMARKS
	QTY	LOT														
1	2		HEATED CABINET, PASS-THRU	Continental Refrigerator	DL1WE-SS-PT	KEC	KEC									
2	1		FIRE SUPPRESSION SYSTEM	ANSUL	R-102	KEC	KEC									
3	1		TYPE 1 EXHAUST HOOD	AVTEC	ECO-ARCH	KEC	KEC	12"	8"	2100	1.00	0"	0"	0	0.00	(2) DUCT COLLARS
4	1		RANGE	GARLAND	GFE24-4L	KEC	KEC									
5	2		STEAMER, CONNECTIONLESS	ACS	(1) New (1) EXISTING	OFCI/KEC	KEC									
6	1		EQUIPMENT STAND DOUBLE	ACS	DE STAND CA	KEC	KEC									
7	1		TILTING SKILLET	CLEVELAND	SGL-30-T1	OFCI	KEC									
8	2		COUNTERTOP CONVEYOR OVEN	LINCOLN	1116-000-U	OFCI	KEC									
8.1	1		MOBILE EQUIPMENT STAND (36"X36")	FABRICATOR	EXISTING	OFCI	OFCI									
9	2		STACKED CONVECTION OVENS	VULCAN	SG44C	OFCI	KEC									
10	1		CONDENSATE HOOD	AVTEC	CUSTOM ECO	KEC	KEC	10"	15"	1875	0.25					MAKE-UP EXISTING BY OWNER
11	4		END CAP	FABRICATOR	CUSTOM	KEC	KEC									
12	1		STAINLESS STEEL WALL FLASHING	FABRICATOR	CUSTOM	KEC	KEC									
13	1		SERVICE COUNTER	EAGLE	CUSTOM	KEC	KEC									
14	2		MERCHANDISER WARMERS	HATCO	GR2SDS-30D	KEC	KEC									
15	2		HEATED STONE SHELVES DROP-IN	HATCO	GRSSB-2418	KEC	KEC									
16	2		HEATED WELLS, MANIFOLDED	HATCO	HWBI-2M	KEC	KEC									
17	2		BREATH GUARDS	BSI	ZG9945	KEC	KEC									
18	1		SERVICE COUNTER	EAGLE	CUSTOM	KEC	KEC									
19	1		DROP-IN REFRIGERATED CASE SELF-SERVE	STRUCTURAL CONCEPTS	DOS4837R	KEC	KEC									
20	0		SPARE NUMBER													
21	1		SERVICE COUNTER	EAGLE	CUSTOM	KEC	KEC									



ONTARIO SD  
ONTARIO HS

No.	Description	Date

EQUIPMENT SCHEDULE	
Project number	077
Date	3/10/16
Drawn by	RS
Checked by	RS
FS1.02	
Scale	

## FOODSERVICE ELECTRICAL SCHEDULE

EQUIPMENT		ELECTRICAL								
ITEM NO	DESCRIPTION	VOLTS	PHASE	AMPS	KW	HP	ELECTRICAL AFF	NEMA PLUG	DIRECT CONNECTION	ELECTRICAL REMARKS
1	HEATED CABINET, PASS-THRU	120	1	7.20	1.50		84"			KEC provide cord and plug
2	FIRE SUPPRESSION SYSTEM									
3	TYPE 1 EXHAUST HOOD	120	1	10.00			120"		X	KEC to provide LED Lights
4	RANGE	120	1	1.00						
5	STEAMER, CONNECTIONLESS	208	3	34.00	12.00			L6-30P		ELECTRICIAN VERIFY NEMA PLUG
6	EQUIPMENT STAND DOUBLE									
7	TILTING SKILLET	120	1	10.00			18"	5-15P		ELECTRICIAN VERIFY NEMA PLUG
8	COUNTERTOP CONVEYOR OVEN	120	1				18"	5-15P		ELECTRICIAN VERIFY VOLTAGE AND PLUG
8.1	MOBILE EQUIPMENT STAND (36"X36")									
9	STACKED CONVECTION OVENS	120	1	9.00	0.00	0.5	18"	5-15P		ELECTRICIAN VERIFY NEMA PLUG
10	CONDENSATE HOOD	120	1	10.00					X	KEC to provide LED lights
11	END CAP									
12	STAINLESS STEEL WALL FLASHING									
13	SERVICE COUNTER									
14	MERCHANDISER WARMERS	208	1	9.81	2.04		18"	14-20P		NOTE: DUAL VOLTAGE 120/208V - REDUCED TO 8.5 AMPS
15	HEATED STONE SHELVES DROP-IN	120	1	5.30	0.64		18"			
16	HEATED WELLS, MANIFOLDED	208	1	11.60	2.42					
17	BREATH GUARDS									
18	SERVICE COUNTER									
19	DROP-IN REFRIGERATED CASE SELF-SERVE	120	1	16.00	1.48		18"	5-20P		
20	SPARE NUMBER									
21	SERVICE COUNTER									



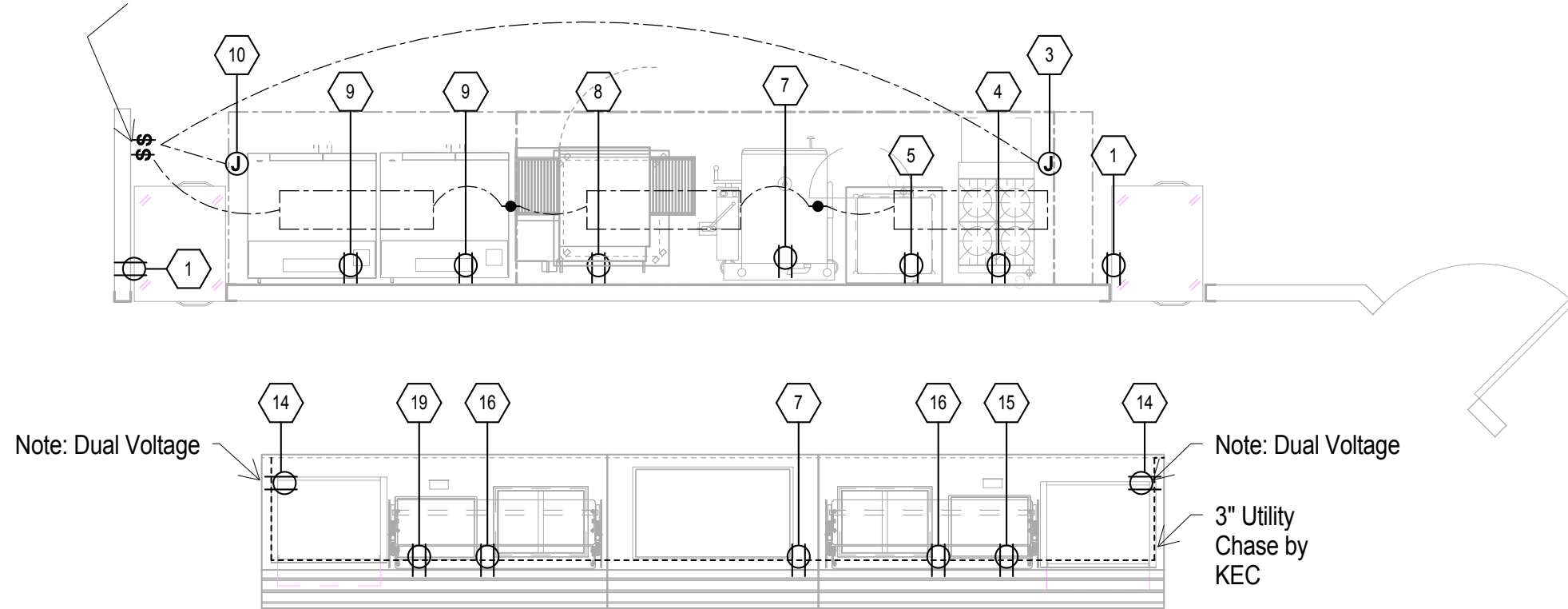
ONTARIO SD  
ONTARIO HS

No.	Description	Date

ELECTRICAL SCHEDULE		
Project number	077	FS1.03
Date	3/10/16	
Drawn by	RS	
Checked by	Checker	
		Scale

Electrician to verify existing panels can accommodate additional loads prior to work. No exposed conduit is acceptable unless authorized by owner.

Electrician verify circuits for (2) fans wired to (1) switch



**ELECTRICAL SYMBOLS:**

- ⊕ WALL MOUNTED DUPLEX OUTLET
- Ⓝ JUNCTION BOX
- EQUIPMENT CONNECTION
- ⋯ FLUORESCENT LIGHT FIXTURE WITH LOW TEMPERATURE BALLAST BY KEC
- \$ SWITCH
- Ⓜ HIGH TEMP ALARM PANEL
- Ⓛ DATA CONNECTION

**1 ELECTRICAL ROUGH-IN**  
1/4" = 1'-0"

**ELECTRICAL SYMBOLS LEGEND**  
1/4" = 1'-0"

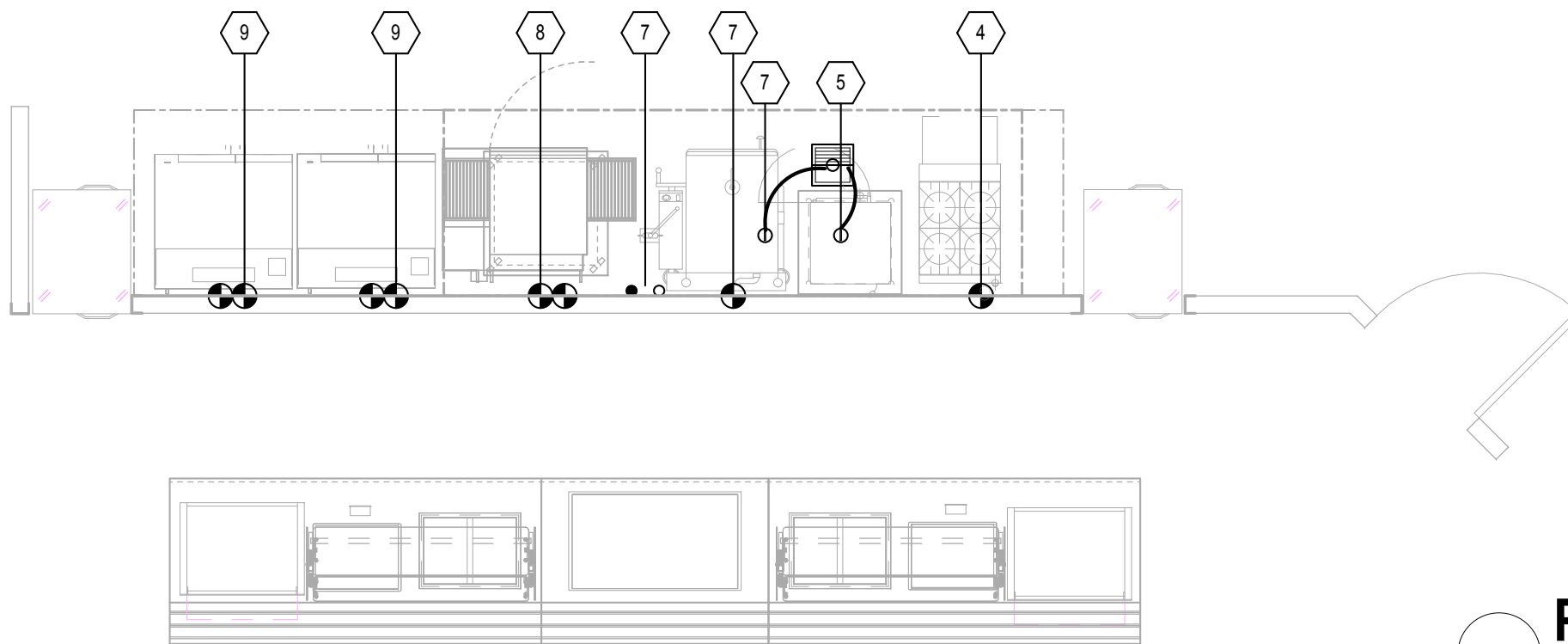


ONTARIO SD  
ONTARIO HS

No.	Description	Date

ELECTRICAL ROUGH-IN	
Project number	077
Date	3/10/16
Drawn by	RS
Checked by	RS
<b>FS2.01</b>	
Scale 1/4" = 1'-0"	

Plumber to disconnect and reconnect all existing equipment.  
Re-route gas and water to accommodate repositioning of equipment.



**PLUMBING SYMBOLS:**

- COLD WATER
- HOT WATER
- ○ HOT & COLD WATER
- ⊕ DIRECT WASTE CONNECTION
- ⊖ INDIRECT WASTE CONNECTION
- ⊙ FLOOR DRAIN
- ⊙ FLOOR DRAIN WITH FUNNEL
- ⊙ FLOOR SINK
- ⊙ GAS CONNECTION
- ⊙ REFRIGERATION CONNECTION
- ⊙ FLOOR DRAIN WITH 24" SQUARE SLOPED AREA TO DRAIN
- ⊙ TRENCH DRAIN

**PLUMBING SYMBOLS LEGEND**  
1/4" = 1'-0"

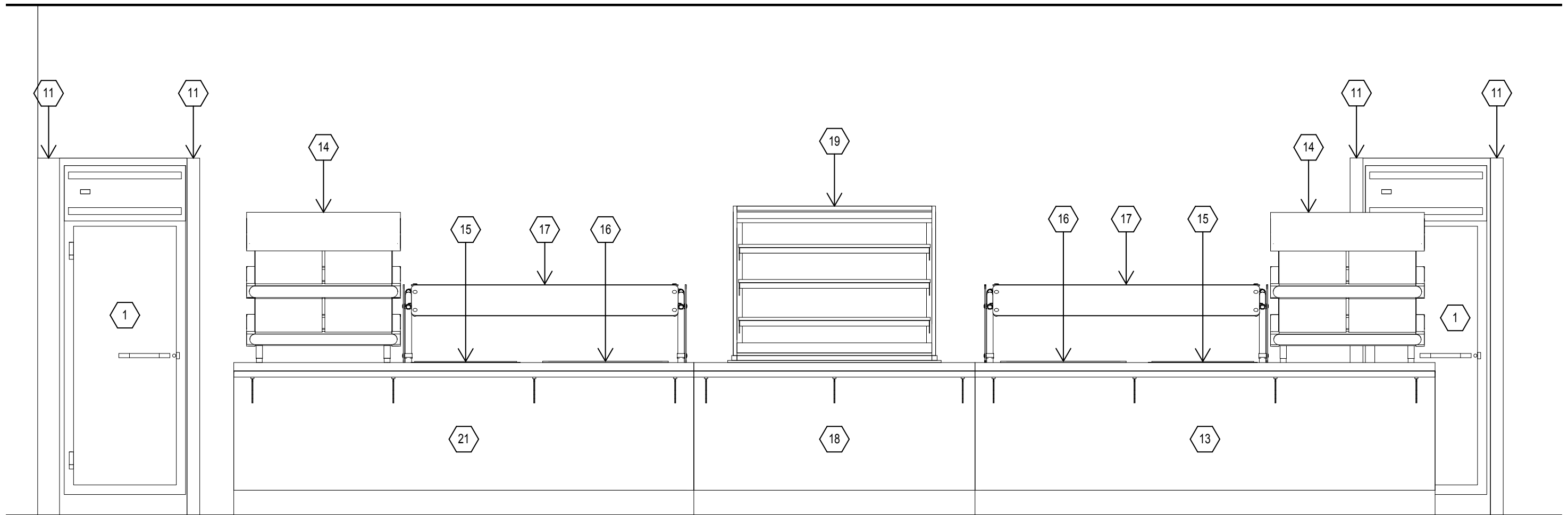
**1 PLUMBING ROUGH-IN**  
1/4" = 1'-0"



ONTARIO SD  
ONTARIO HS

No.	Description	Date

PLUMBING ROUGH-IN	
Project number	077
Date	3/10/16
Drawn by	RS
Checked by	Checker
<b>FS2.02</b>	
Scale 1/4" = 1'-0"	



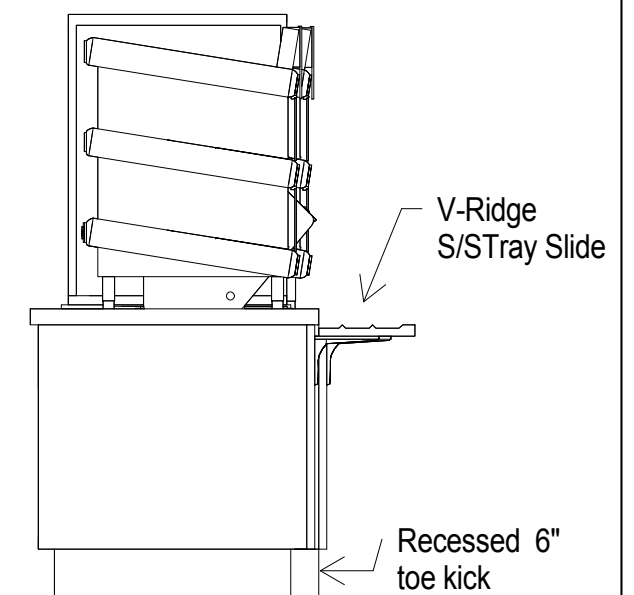
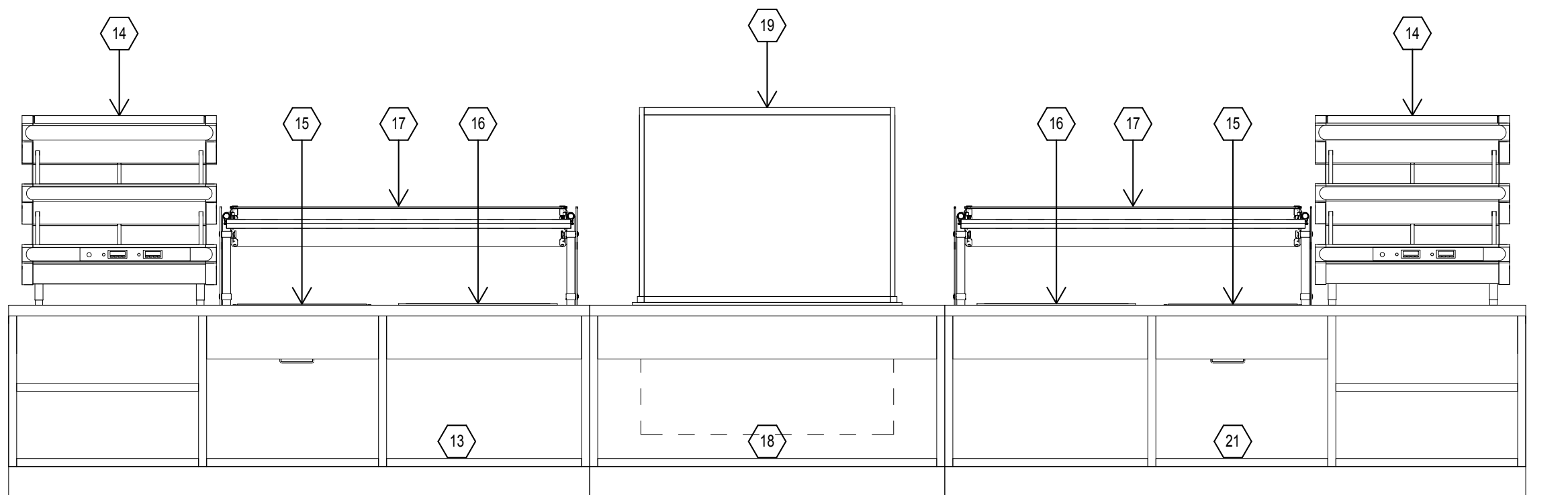
**1 SERVICE LINE**  
 1/2" = 1'-0"



ONTARIO SD  
 ONTARIO HS

No.	Description	Date

ELEVATIONS		FS3.01
Project number	077	
Date	3/10/16	
Drawn by	RS	
Checked by	RS	
Scale 1/2" = 1'-0"		



**1 SERVICE LINE -1**  
1/2" = 1'-0"

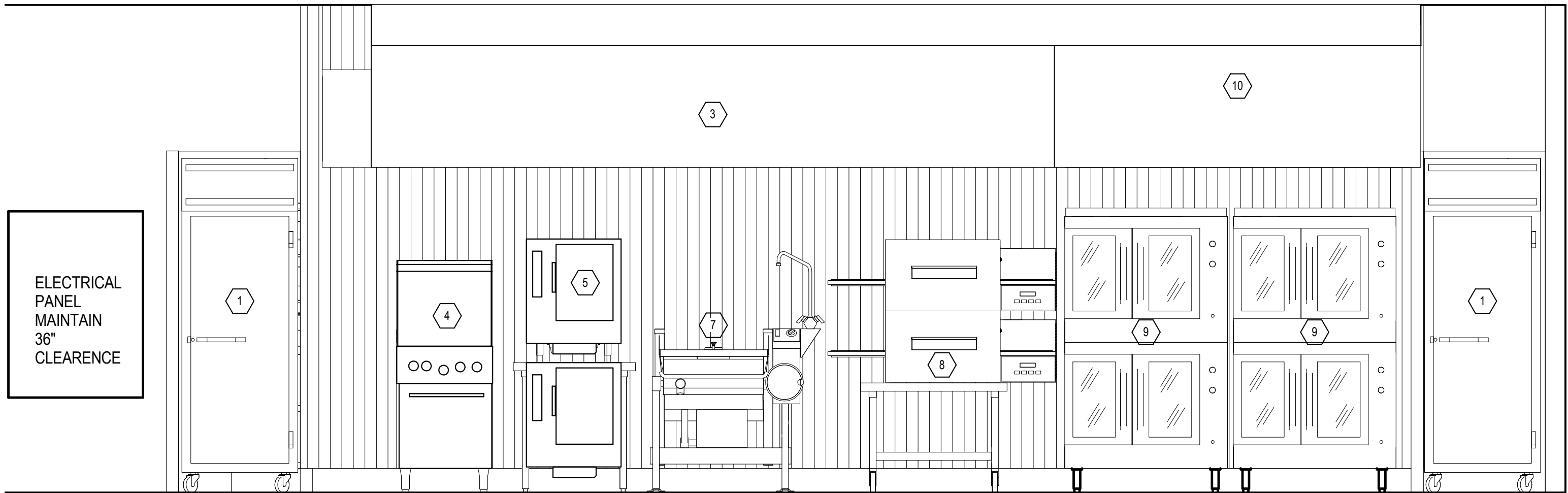
**2 SECTION VIEW**  
1/2" = 1'-0"



ONTARIO SD  
ONTARIO HS

No.	Description	Date

ELEVATIONS		FS3.02
Project number	077	
Date	3/10/16	
Drawn by	RS	
Checked by	RS	
Scale 1/2" = 1'-0"		



ELECTRICAL  
PANEL  
MAINTAIN  
36"  
CLEARANCE

**1 COOK LINE**  
1/2" = 1'-0"

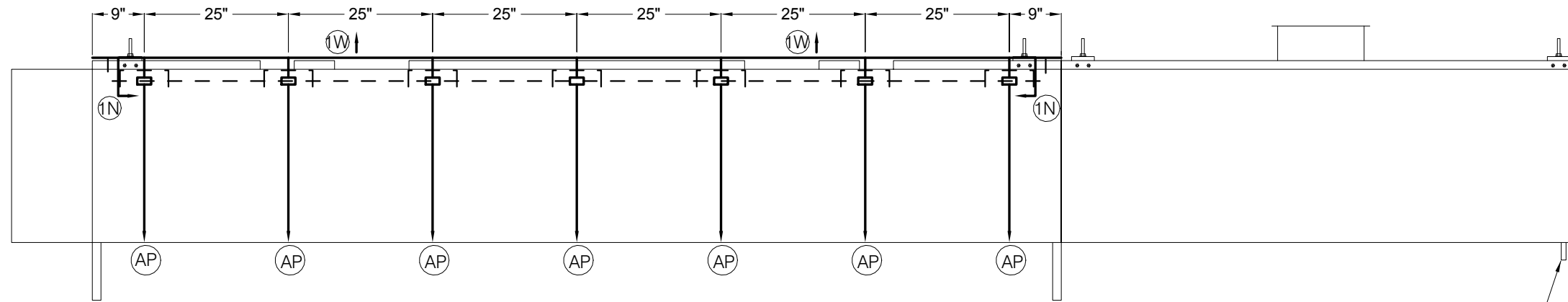
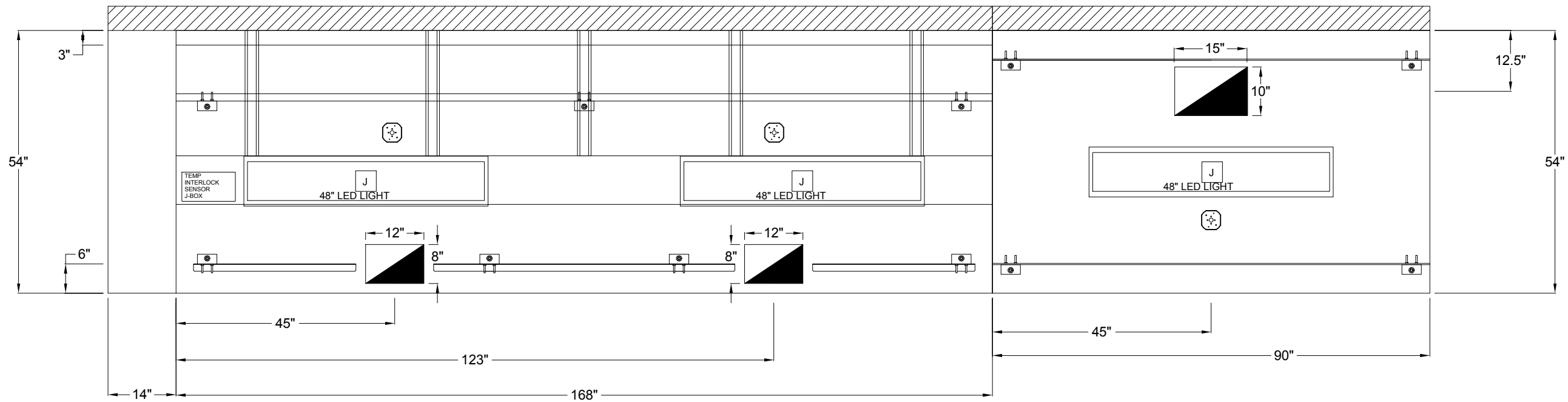


ONTARIO SD  
ONTARIO HS

No.	Description	Date

ELEVATIONS	
Project number	077
Date	3/10/16
Drawn by	RS
Checked by	RS
<b>FS3.03</b>	
Scale 1/2" = 1'-0"	





.5" THREADED DRAIN  
LOCATED ON RIGHT SIDE

HOOD ITEM	APPROX HOOD HANGING WEIGHT	HOOD LENGTH	HOOD WIDTH	EXHAUST					SUPPLY				FILTERS-CARTRIDGES								
				TOTAL EXH. CFM	EXH RATE (LIN. FT)	COLLARS		EXH DUCT VELOCITY	S.P. - W.C. AT COLLAR	SUPPLY CFM	COLLARS		SUPPLY DUCT VELOCITY	S.P. - W.C. AT COLLAR	HEIGHT	WIDTH	QTY	CART. VOL HIGH LOW	CFM PER CART/FILTER	CART/FILTER VELOCITY (FFM)	NET AREA SQ. FEET
						F-B	L-R				CFM	L-R									
3	788	168	54	2100	150	8	12	1050	1575	1.0	*	*	*	*	*	*	233	533	3.7		
10	422	90	54	1875	250	10	15	1875	1575	.25	*	*	*	*	*	*	*	*	*		

# 1 HOODS #3 & 10

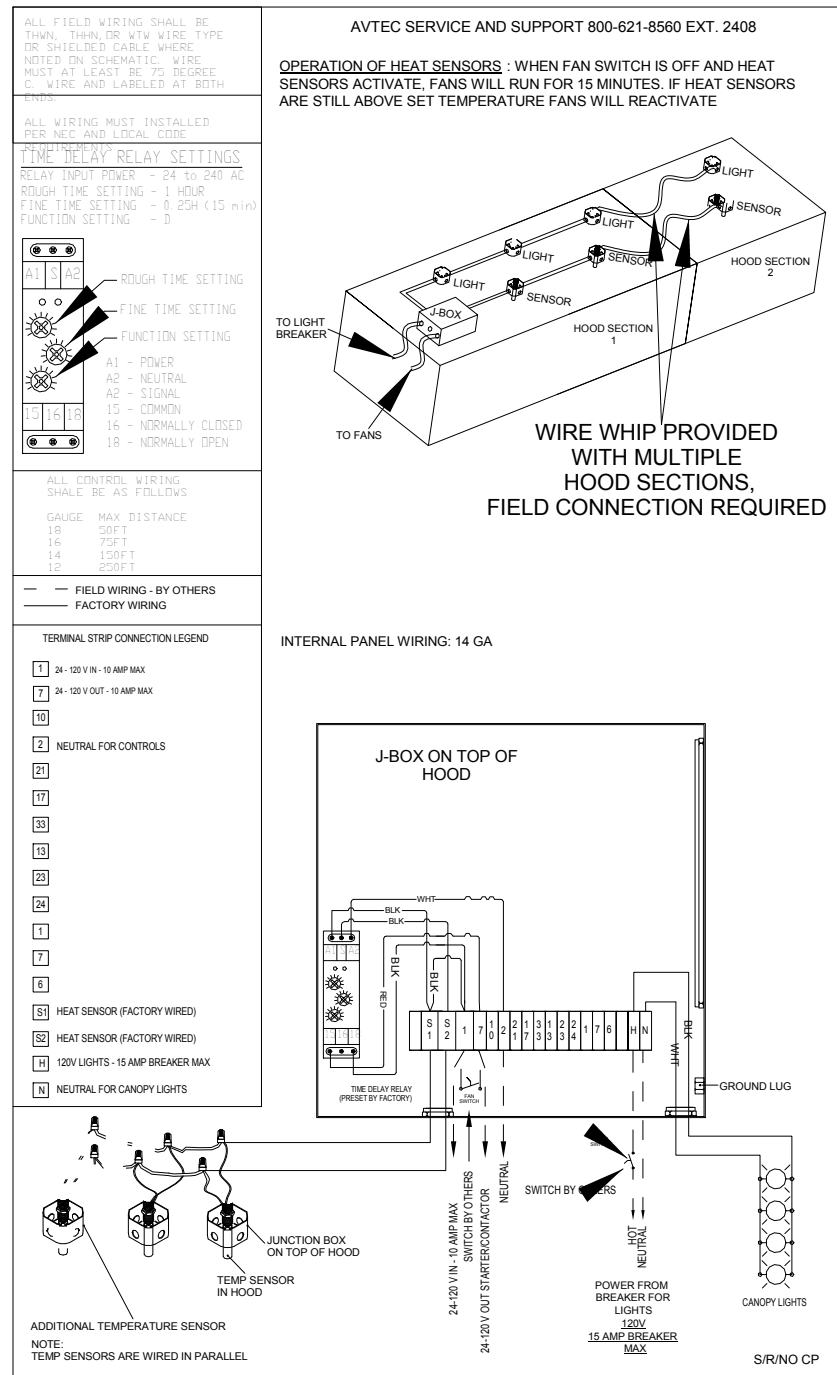
1/2" = 1'-0"



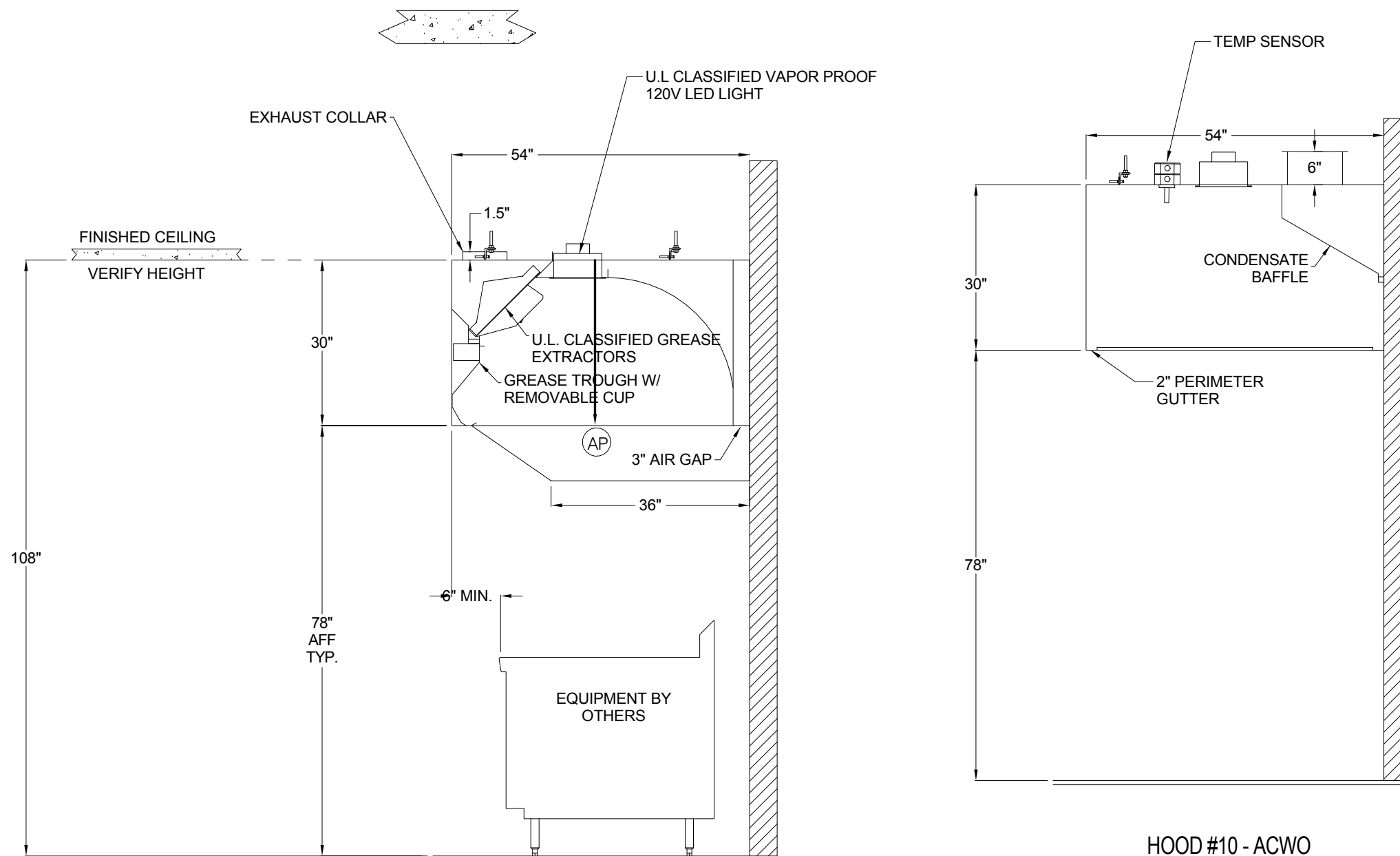
ONTARIO SD  
ONTARIO HS

No.	Description	Date

EXHAUST HOOD DETAILS	
Project number	077
Date	3/10/16
Drawn by	JD
Checked by	Checker
<b>FS4.01</b>	
Scale As indicated	



CLEARANCE IS REQUIRED TO CLOSEST OVERHEAD OBSTRUCTION (OR STRUCTURAL CEILING). AVTEC REQUIRES 10" (18" FOR WATER WASH HOODS) FROM THE TOP OF THE VENTILATOR DUCT COLLAR CONNECTION, ACCESS IS THE RESPONSIBILITY OF THE KITCHEN EQUIPMENT CONTRACTOR.



**1 Hood Wiring**  
1 1/2" = 1'-0"

**2 # 3 Hood Section**  
1/2" = 1'-0"

**3 #10 Hood Section**  
1/2" = 1'-0"



ONTARIO SD  
ONTARIO HS

No.	Description	Date

EXHAUST HOOD DETAILS		FS4.02
Project number	077	
Date	3/10/16	
Drawn by	JD	
Checked by	RS	
Scale As indicated		

**INSTALLATION REQUIREMENTS**

- PROVIDE DRAWINGS TO APPROPRIATE TRADES REFERENCING UTILITY SERVICE AND COORDINATE FINAL CONNECTION.
- DELIVER, ASSEMBLE AND INSTALL AVTEC SYSTEMS PER DRAWING.
- FURNISH WIRING (AND PLUMBING) DIAGRAMS TO END USER.
- THE K.E.C. MUST INFORM AVTEC OF ANY CHANGES IN EQUIPMENT OR BUILDING STRUCTURE. FIELD MODIFICATIONS DUE TO INSUFFICIENT INFORMATION ARE THE RESPONSIBILITY OF THE K.E.C.

**RETURN DRAWING (S) TO UNIFIED BRANDS VIA**

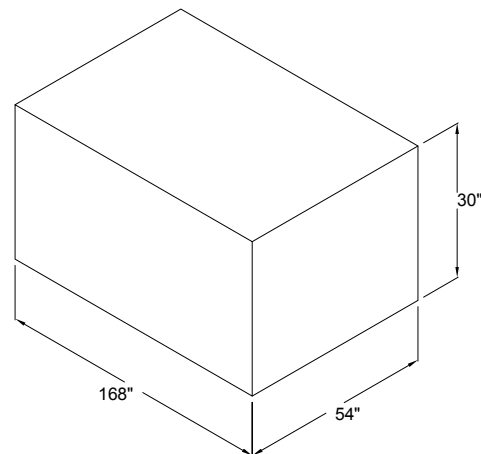
EMAIL  
CS@UNIFIEDBRANDS.NET

FAX  
888-200-4975

MAILED HARD COPIES

UNIFIED BRANDS  
525 S COLDWATER RD  
WEIDMAN, MI 48893

BUILDING MUST HAVE PASSAGEWAY LARGE ENOUGH TO PASS UNITS OF THIS SIZE  
(FOR CRATED UNITS ADD 6" TO EACH DIM.)



**NOTES TO KEC**

THE INFORMATION PROVIDED ON THIS DRAWING HAS BEEN GENERATED BASED ON THE LATEST INFORMATION SENT TO AVTEC. AVTEC MUST BE NOTIFIED IN WRITING ANY DEVIATION FROM THE INFORMATION SHOWN ON THIS DRAWING AND OR NOTES BELOW. ANY MODIFICATION TO AVTEC PRODUCT DURING OR AFTER FABRICATION WILL BE THE RESPONSIBILITY OF THE KEC. ALSO NOTE THAT ANY DEVIATION DURING FABRICATION MAY RESULT IN A CHANGE TO THE SCHEDULED SHIP DATE

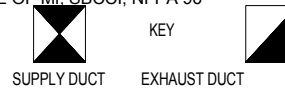
- KEC MUST ENSURE HOOD DIMENSIONS AS SHOWN WILL PROVIDE PROPER CAPTURE FOR ALL COOKING EQUIPMENT.
- (6" MIN OVERHANG REQUIRED ON EACH OPEN SIDE) (12" MIN OVERHANG RECOMMENDED FOR BROILERS)
- EQUIPMENT SECTIONS AS DIMENSIONED WILL ACCESS MOST POINTS OF INSTALLATION. IF ADDITIONAL FIELD JOINTS ARE REQUIRED THE KEC MUST NOTIFY AVTEC PRIOR TO FABRICATION.
- ALL DIMENSIONS SHOWN ARE EQUIPMENT DIMENSIONS. OVERALL DIMENSIONS ARE +/- 1/4" CONSTRUCT WALLS TO SUIT EQUIPMENT DIMENSIONS.
- HOODS ARE CONSTRUCTED IN ACCORDANCE WITH AVTEC'S UL LISTING AND NFPA 96 INCLUDING EXCEPTIONS.
- IT IS THE RESPONSIBILITY OF THE KITCHEN EQUIPMENT CONTRACTOR (K.E.C.) TO SUPPLY THE BULBS FOR USE IN THE WORK LIGHT FIXTURES

**GENERAL NOTES**

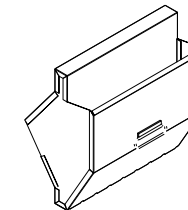
IF YOU ARE INSTALLING A VENTILATION EXHAUST SYSTEM INTO AN AREA WHICH HAS CERTAIN STANDARDS OR CODES OTHER THAN THOSE NORMALLY ACCEPTED IN THE FOOD SERVICE INDUSTRY (NSF, UL, ETC) AVTEC MUST BE ADVISED OF THESE SPECIFICATIONS IN DETAIL BEFORE FABRICATION OF THE EQUIPMENT BEGINS. FAILURE TO ADVISE AVTEC OF SPECIFIC REQUIREMENTS COULD RESULT IN THE JOB BEING DELAYED, ADDITIONAL COSTS, OR BOTH.

ALL AVTEC HOODS MEET ONE OR MORE OF THE FOLLOWING

U.L. 710, U.L. 710C, BOCA, NSF, ICBO  
STATE OF MI, SBCCI, NFPA 96

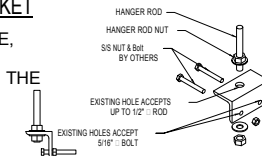


**EXTRACTION MEDIA**



**HANGER BRACKET**

SHIPPED LOOSE, LOCATED & INSTALLED IN THE FIELD BY OTHERS



HOLES DRILLED THROUGH HOOD ANGLE (NOT SHOWN) ARE INSTALLED AFTER BRACKET ATTACHMENT POINTS HAVE BEEN DETERMINED. EQUIPMENT MUST BE SUPPORTED BY ALL HANGING BRACKETS PROVIDED. BRACKETS SHIPPED LOOSE FROM FACTORY.

**REVISIONS**

REV.	DATE	DESCRIPTION	BY
A	2/9/16	REVISE 135584A TO OPTION 1	JDB
*	*	-	*
*	*	-	*
*	*	-	*
*	*	-	*
*	*	-	*

PRELIMINARY  
DRAWING

JD	7/24/15	*	*
SEE SHEET DETAIL		*	
135584		1	OF 1

ONTARIO HIGH SCHOOL-OPTION 1

RSA, INC.



**1 Hood Notes**

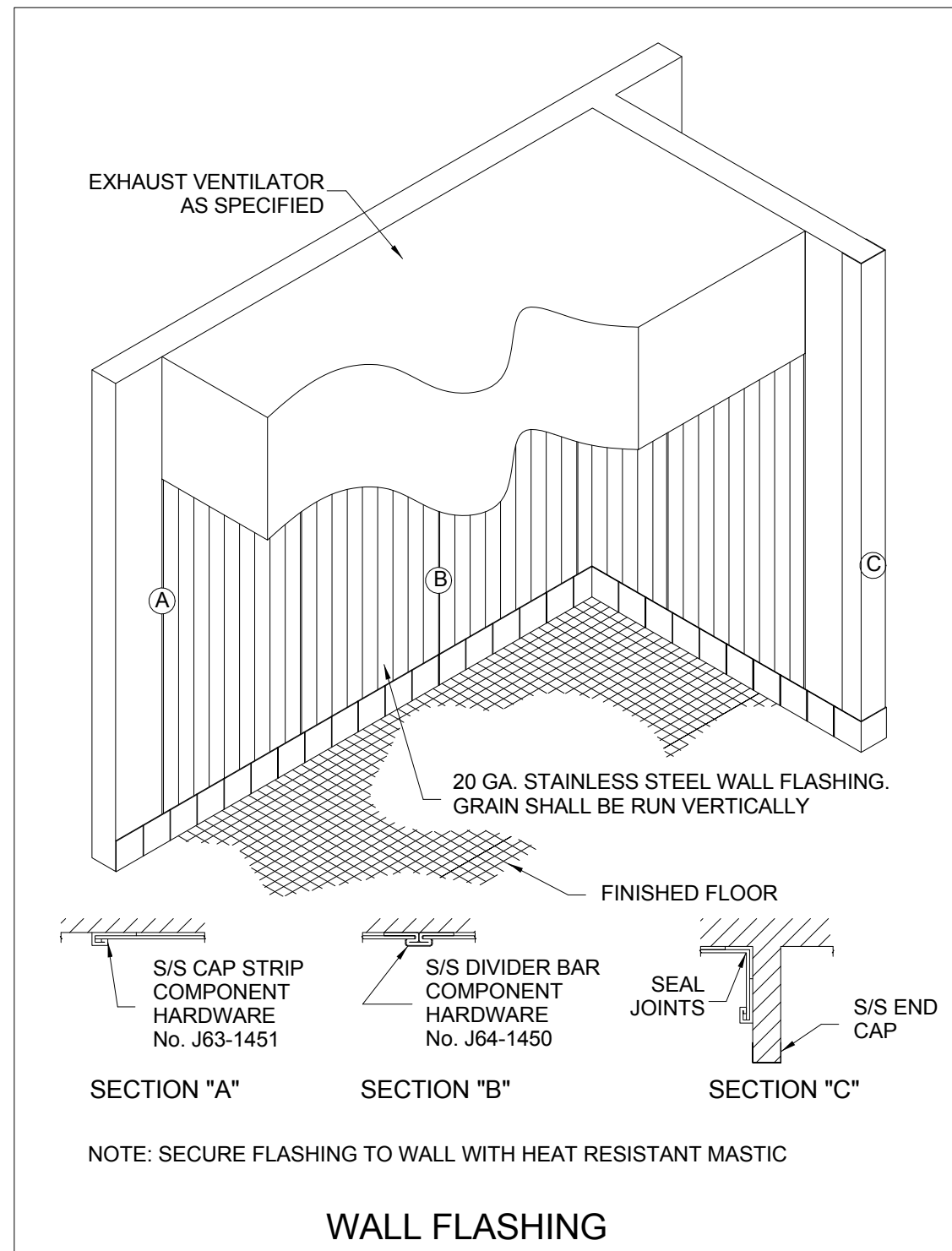
3/4" = 1'-0"



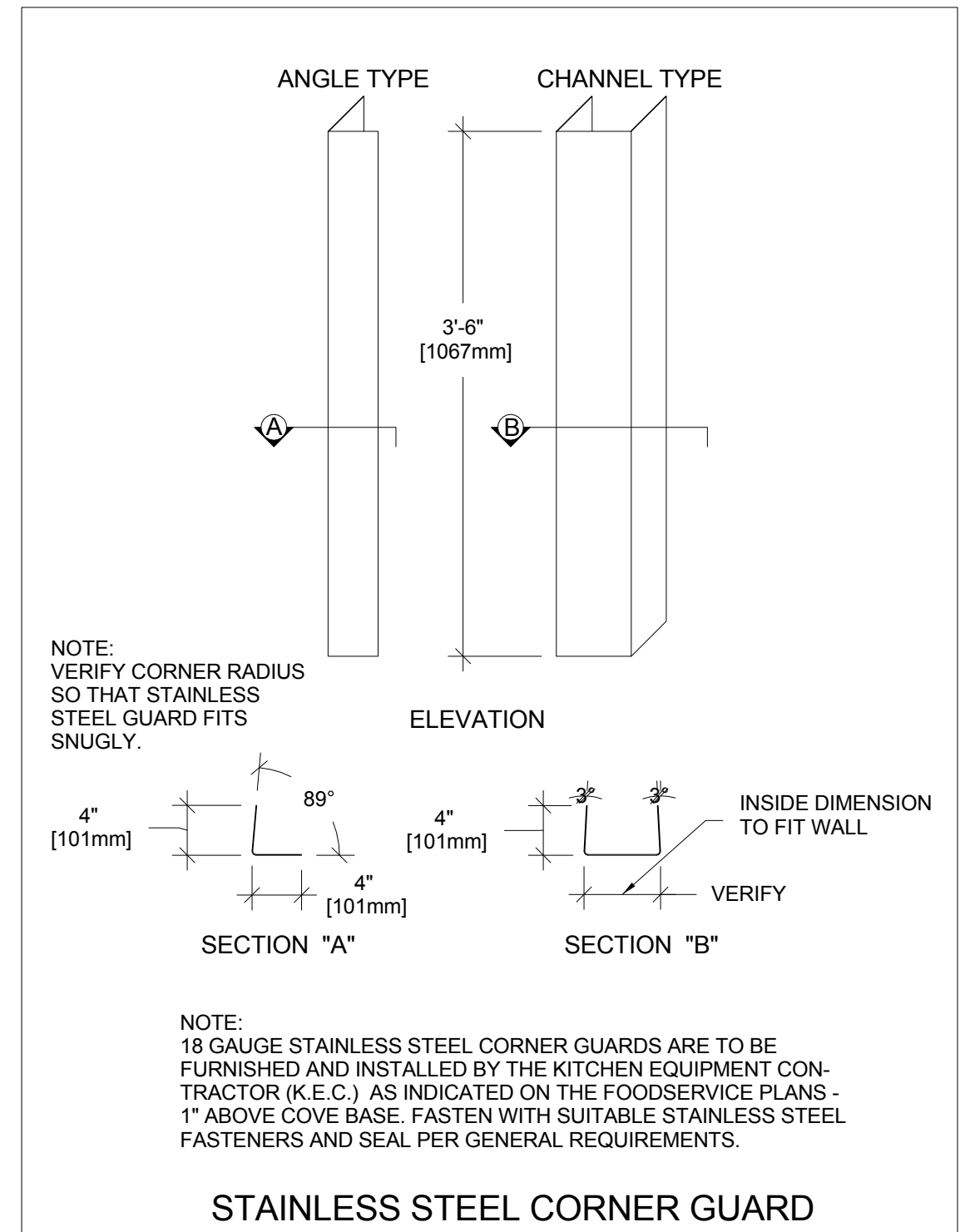
ONTARIO SD  
ONTARIO HS

No.	Description	Date

EXHAUST HOOD DETAILS	
Project number	077
Date	3/10/16
Drawn by	JD
Checked by	RS
<b>FS4.03</b>	
Scale 3/4" = 1'-0"	



**1 S/S WALL FLASHING**  
3/8" = 1'-0"



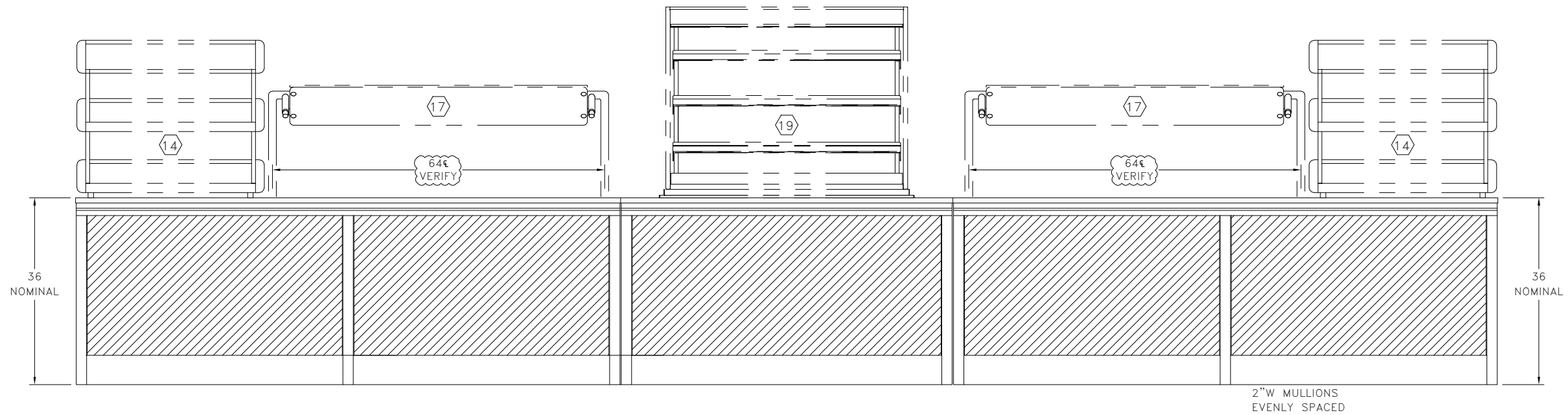
**2 CORNER GUARDS**  
3/8" = 1'-0"



ONTARIO SD  
ONTARIO HS

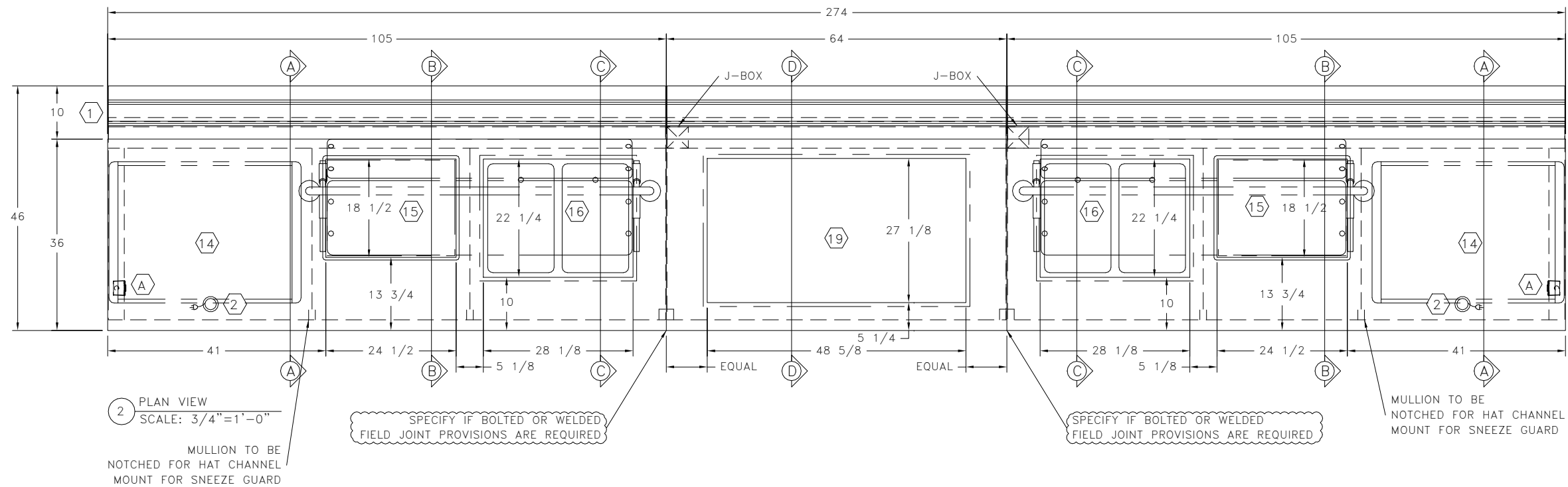
No.	Description	Date

STAINLESS STEEL TYPICALS		
Project number	077	<b>FS4.04</b>
Date	3/10/16	
Drawn by	RS	
Checked by	RS	
		Scale 3/8" = 1'-0"



## 2 SERVICE LINE FE VIEW

1/2" = 1'-0"



## 1 SERVICE LINE DETAILS

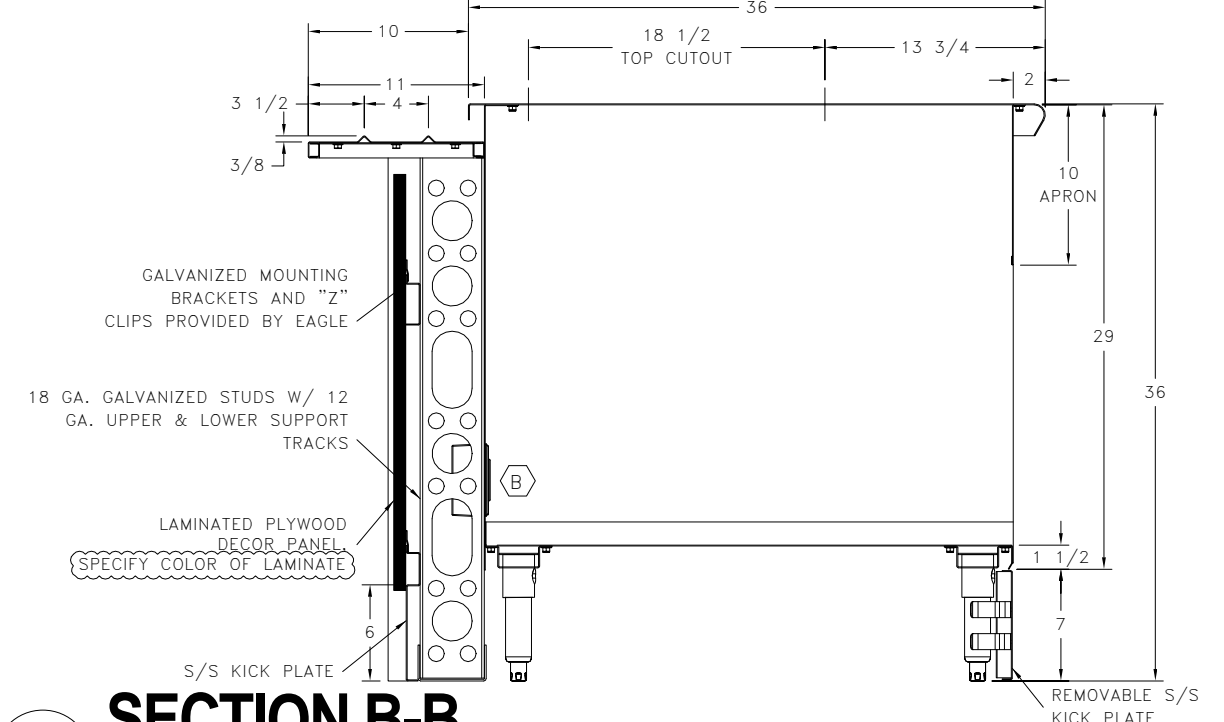
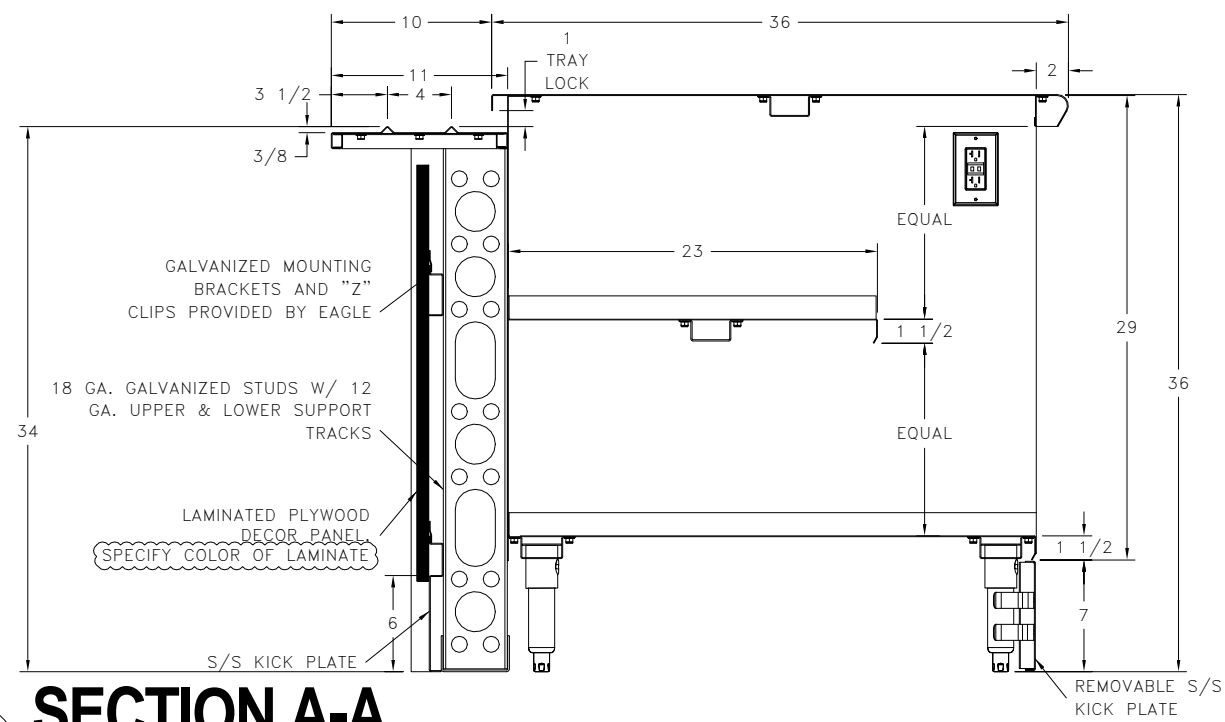
1/2" = 1'-0"



ONTARIO SD  
ONTARIO HS

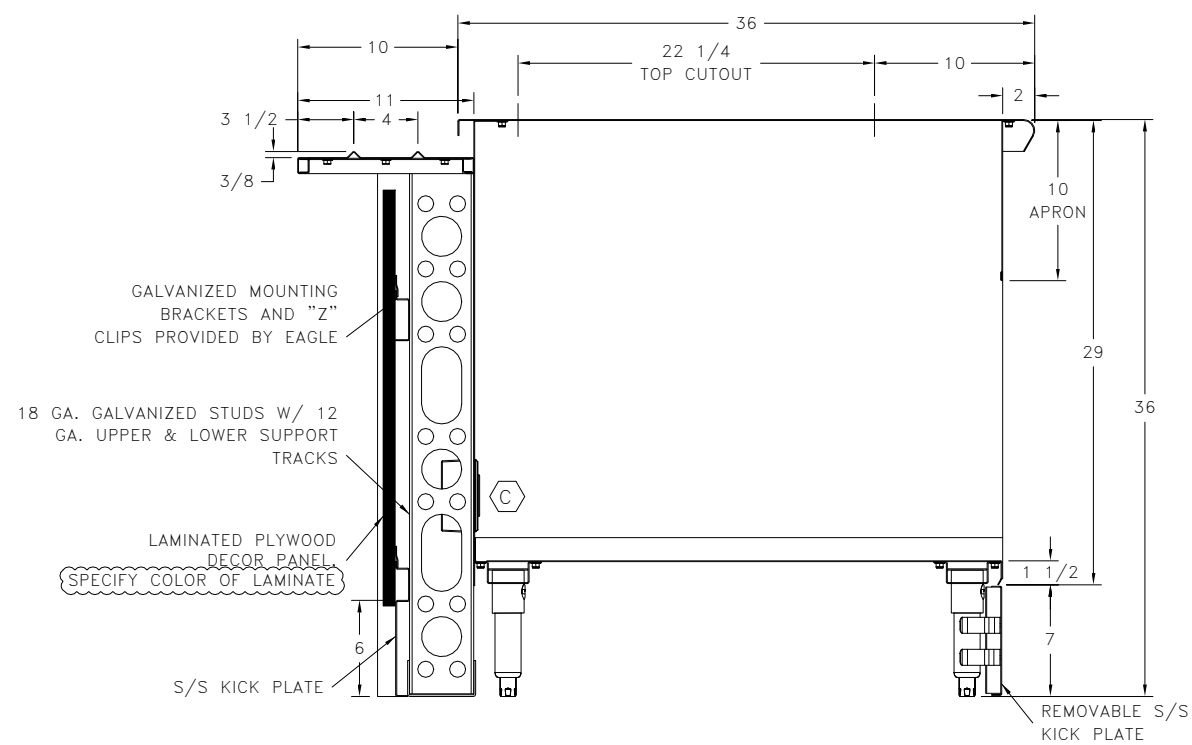
No.	Description	Date

EAGLE SERVICE LINE DETAILS		
Project number	077	FS4.05
Date	3/10/16	
Drawn by	Author	
Checked by	Checker	
Scale		1/2" = 1'-0"

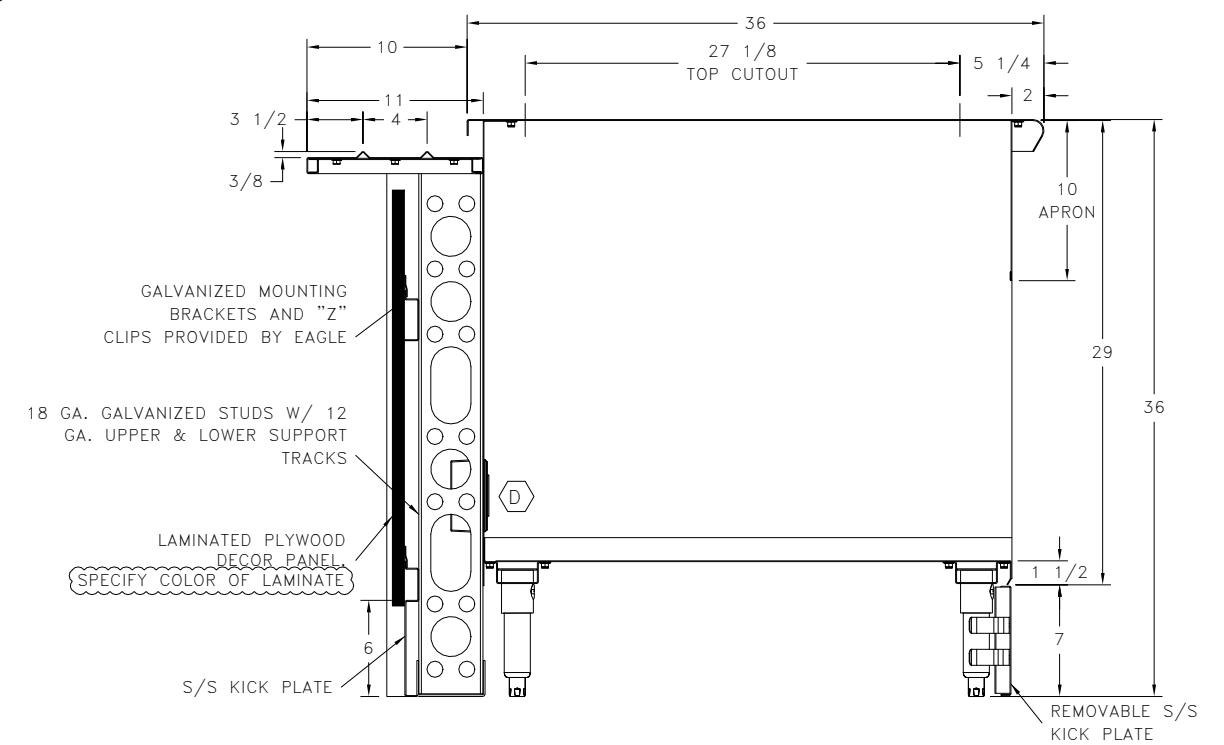


**1 SECTION A-A**  
1/2" = 1'-0"

**2 SECTION B-B**  
1/2" = 1'-0"



**3 SECTION C-C**  
1/2" = 1'-0"



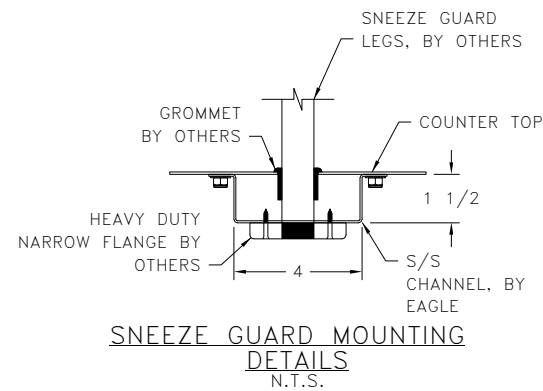
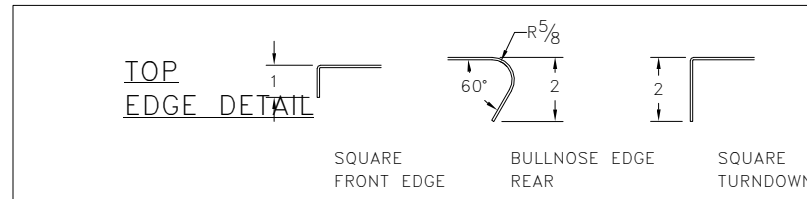
**4 SECTION D-D**  
1/2" = 1'-0"



ONTARIO SD  
ONTARIO HS

No.	Description	Date

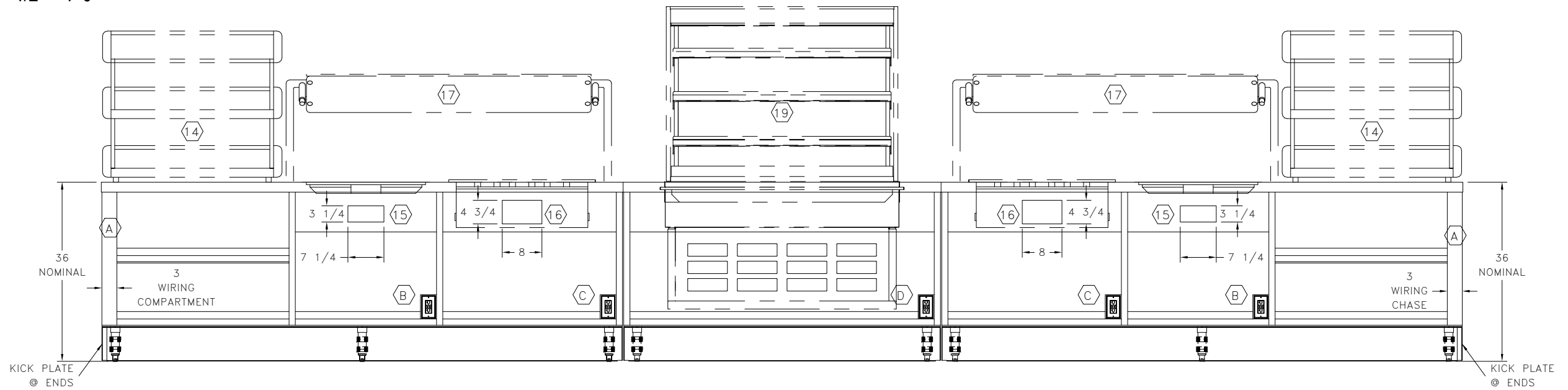
EAGLE SERVICE LINE DETAILS		
Project number	077	<b>FS4.06</b>
Date	3/10/16	
Drawn by	Author	
Checked by	Checker	
		Scale 1/2" = 1'-0"



**EAGLE FABRICATION DETAILS**  
 TOP: 14/3 S/S #4 SATIN FINISH  
 FRAMING: FULL LENGTH S/S HAT CHANNEL FRAMING  
 BASE CABINET: 18/4 S/S SPOT WELDED CONSTRUCTION W/ INTEGRALLY FORMED FLANGES SECURED TO TOP WITH S/S STUDS & LOCK NUTS  
 CENTER SHELF: 18/4 S/S FIXED CENTER SHELF SPOT WELDED BETWEEN CABINET MULLIONS  
 BOTTOM PANEL: 18/4 S/S BOTTOM PANEL W/ 1 1/2" UPTURNS AT REAR & ENDS  
 LEG CHANNELS: FULL LENGTH CHANNELS WITH EAGLE PATENTED UNI-LOCK SYSTEM. S/S GUSSETS WELDED TO 12GA S/S PLATE INSIDE LEG CHANNELS  
 LEGS: 1 5/8" Ø TYPE 304 S/S TUBING  
 FEET: S/S CLAD BULLET FEET W/ 1" ADJUSTABILITY  
 SOUND DEADENING: DOUBLE SIDED ADHESIVE TAPE BETWEEN BASE/FRAMING & UNDERSIDE OF TOP

## 2 EDGES-POST MOUNTING

1/2" = 1'-0"



ELECTRICAL SCHEDULE						
TAG	QTY	DESCRIPTION	ELECTRICAL INFO	SUPPLIED	WIRED	DETAILS/REMARKS
A	2	NEMA 14-20R	RATED 9.81A @ 120/208V <b>VERIFY</b>	EAGLE	EAGLE	NEMA 5-20R GFCI CONVENIENCE RECEPTACLE MOUNTED IN BASE, PRE-WIRED TO J-BOX
B	2	NEMA 5-15R	RATED 5.3A @ 120V <b>VERIFY</b>	EAGLE	EAGLE	NEMA 5-20R GFCI CONVENIENCE RECEPTACLE MOUNTED IN BASE, PRE-WIRED TO J-BOX
C	2	NEMA 6-15R	RATED 11.6A @ 208V <b>VERIFY</b>	EAGLE	EAGLE	NEMA 5-20R GFCI CONVENIENCE RECEPTACLE MOUNTED IN BASE, PRE-WIRED TO J-BOX
D	1	NEMA 5-20R	RATED 15.8A @ 120V <b>VERIFY</b>	EAGLE	EAGLE	NEMA 5-20R GFCI CONVENIENCE RECEPTACLE MOUNTED IN BASE, PRE-WIRED TO J-BOX

## 1 ELECTRICAL-SERVICE LINE

1/2" = 1'-0"



ONTARIO SD  
 ONTARIO HS

No.	Description	Date

EAGLE SERVICE LINE DETAILS		
Project number	077	<b>FS4.07</b>
Date	3/10/16	
Drawn by	Author	
Checked by	Checker	
		Scale 1/2" = 1'-0"